

Bs'd



INTERNATIONAL HEADQUARTERS OF PROFESSIONAL SHATNEZ LABORATORIES
Yosef Sayagh 515 8th Street, Lakewood NJ 08701 (732) 364 7056 E-mail shatnezhedqtrs@optimum.net

Alterations – Jan '14

Most Dry-Cleaners today do alterations, even though we do not have any issues with their cleaning, however we do have issues with their alterations.

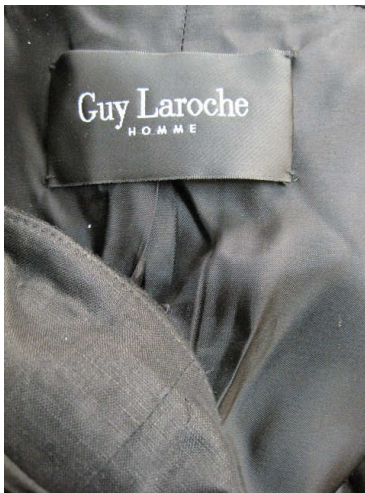
Tailors in Europe may use linen threads. American tailors do not generally use linen thread. Therefore in America, we are not concerned that tailors or cleaners are using linen thread.

The concern today is that a tailor or a seamstress may add a shoulder pad or a fabric to a garment and may thereby create Shatnez. If the garment was woolen, and the added fabric used to alter the garment is linen or vice versa, the garment becomes forbidden to wear as Kilayim.

Therefore if a shoulder pad or a piece of material etc. was added by a tailor or seamstress, they should be tested to determine their true content.

Here are two examples recently found at the Flatbush Shanez Laboratory:

A] The sleeve of this wool coat was extended with a pure linen cloth [found by Neria Davidov].



B) The. Lining of this skirt was lengthened with a cotton linen cloth, one direction cotton other direction linen.

